

Part # 22-1510 - 99-299

GENERAL OPERATING INSTRUCTIONS: 5 Lb. Pull-A-Charge™ Refrigerant Charging Cylinders

**I KNOW,
I KNOW**

**...But Read Carefully Before
Using Equipment Anyway!**

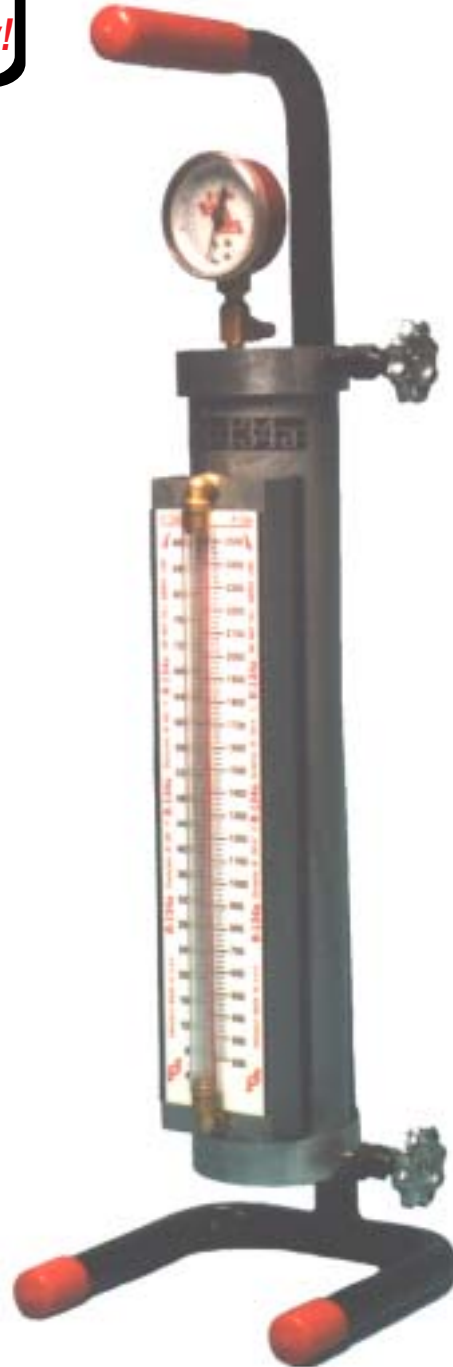
DISCLAIMER

We believe the information contained herein to be reliable. However, general technical information is given by us without charge and the user shall employ such information at his own discretion and risk. We assume no responsibility for results or damages incurred from the use of such information in whole or in part. **Always refer to specific instructions and technical information supplied by vehicle manufacturer.**

All warranties expressed or implied, including warranties on merchantability and fitness of purpose, are null and void if the equipment is altered, damaged or misused in any way, or if equipment is not repaired by authorized repair station using authorized parts.

SPECIFICATIONS

- 5 lb. Capacity
- 12" power cord with 3-prong plug for 110v. (Also available in 220 v. single phase)
- 100 watt replaceable heater cartridge.
- Weight - 16 lb.
- Dimensions -
Height - 30" - Width - 8 1/2" -
Depth - 9"
- HI Pressure safety valve will activate at 150-160 PSI



GENERAL INFORMATION

1. **DO NOT** plug heater in without refrigerant in charging cylinder
 2. Use refrigerant canisters in 30 lb.- 50 lb.
 3. Invert supply canister (valve on bottom) when filling charging cylinder
 4. **ALWAYS** wear safety goggles or glasses when using A/C equipment
 5. **ALWAYS** use Anti-Blow Back valves with hoses
 6. Make sure valves are closed on charging cylinder before any operation
 7. Unused refrigerant in cylinder can be returned to supply canister. (**See the RETURN UNUSED REFRIGERANT TO SUPPLY CANISTER** Section of this Instruction Booklet)
-

FILLING CYLINDER

1. Check that all valves are **CLOSED**
2. Determine the proper amount of refrigerant. (Refer to factory or A/C Service Manual.
3. Invert supply canister (valve on bottom) and attach hose from canister to **HI-SIDE (LIQUID)** valve
4. Open valve on supply canister and **HI-SIDE (LIQUID)** valve
5. Fill with the desired amount of refrigerant
6. Close **BOTH** valves
7. Plug in heater (**DO NOT** exceed 140 PSI on pressure gauge)

SAFETY NOTE:

AT 150 - 160 PSI, SAFETY RELIEF VALVE WILL ACTIVATE

GAS CHARGING

1. Fill cylinder to desired refrigerant level. Plug heater in and let pressure rise to 125 PSI
2. With manifold gauge connected to vehicle, check that all valves are closed (Manifold and Charging Cylinder)
3. Connect **YELLOW HOSE** from Manifold to **LO SIDE (GAS)** Valve on Charging Cylinder
4. **MAKE SURE VEHICLE & A/C SYSTEM IS RUNNING**
5. Open gas valve on charging cylinder and manifold (**LO SIDE ONLY**)
6. Allow desired amount of refrigerant to enter system
7. Close all valves
8. Gas Charge is Complete



LIQUID CHARGING (Fast Charge)

MAKE SURE VEHICLE AND A/C SYSTEM ARE NOT RUNNING

1. Once cylinder has desired refrigerant level, plug heater in and let pressure rise to 125 PSI
 2. With manifold gauge connected to vehicle, check that **ALL** valves are closed (Manifold & Charging Cylinder)
 3. Connect **YELLOW HOSE** from manifold to **HI SIDE (LIQUID)** valve on charging cylinder
 4. Open liquid valve on charging cylinder and manifold (**HI SIDE ONLY**)
 5. Allow desired amount of refrigerant to enter system
 6. Close all valves
 7. Liquid Charge is Complete
-

RETURN UNUSED REFRIGERANT TO SUPPLY CANISTER

1. Check that all valves are closed
 2. Connect hose from **HI SIDE (LIQUID)** valve to supply canister valve
 3. Plug in heater (Let Pressure Rise to 125 PSI)
 4. Open valves on Charging Cylinder, Storage Canister and allow refrigerant to reenter supply canister
 5. Unplug heater
 6. Store charging cylinder in a safe place
-

RECOVERY

NOTE: *There will be periods of time when it is necessary to manually relieve pressure from the cylinder in order to fill it*

1. Never vent refrigerant into atmosphere. Attach a hose to the **LO SIDE (GAS)** valve of cylinder and inlet fitting of the recovery
2. Follow instructions provided with the Recovery Station

For Technical Questions & Replacement Parts call 845-562-1442. In the unlikely event that you need factory repair, part or item must be securely packed and shipped prepaid to:

Classic Tool Design, Inc.
Repair Department
31 Walnut Street, New Windsor, NY 12553

